

# Where Should I Move?

Romel

Thomas Lutz

Anh

Trevor Walters



# Overview

- State Selection
- Measures
- Winning Zip Codes

# State Selection

- Criteria for State Selection:
  - East Coast and West Coast
  - Contains at least 2 "major" cities
  - Large Industry Presence
  - Environmental factors
- Justification for State Selection
  - California
  - Pennsylvania



- California



- Pennsylvania



# Identifying Criteria for Ideal Zip Code

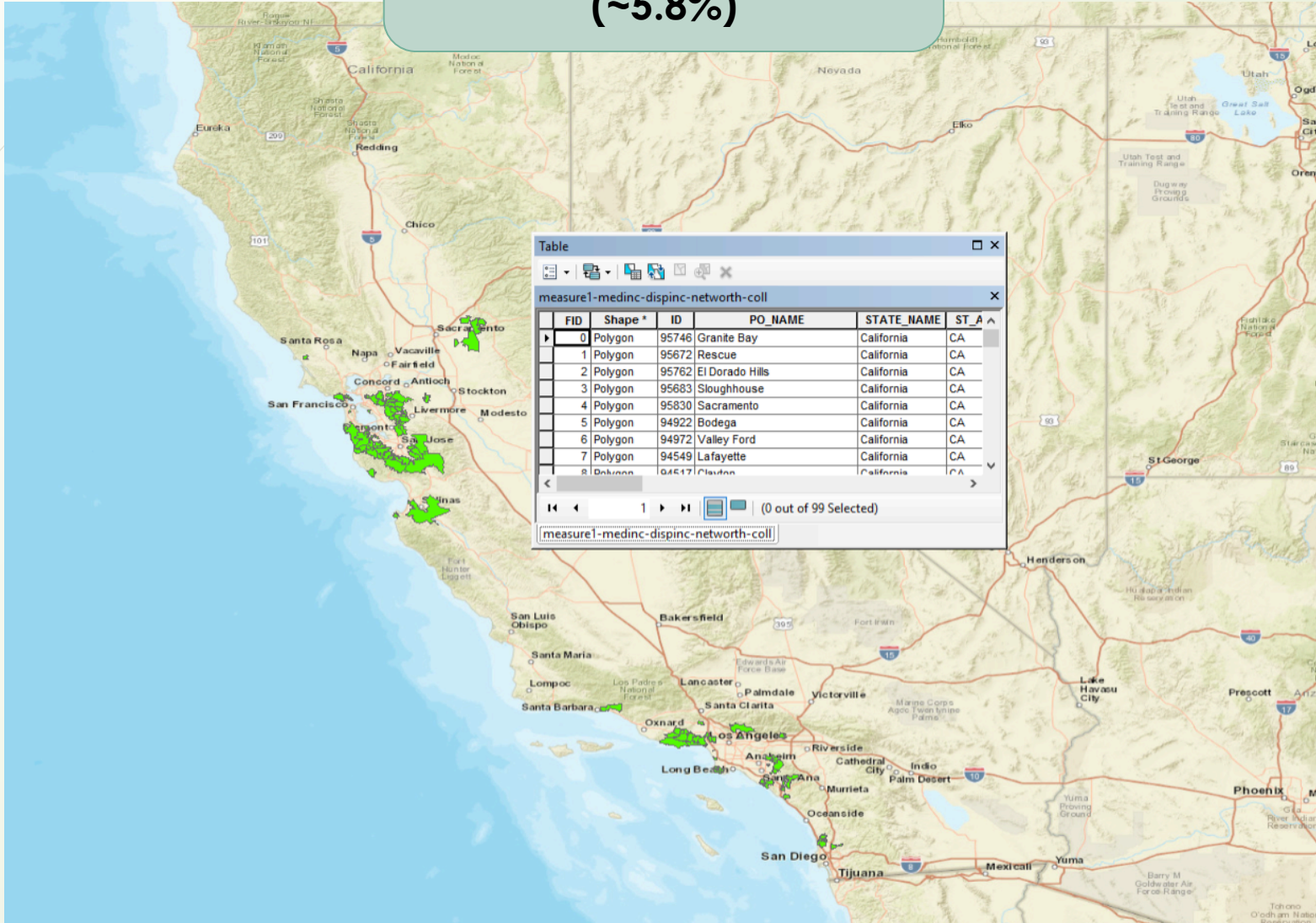
- Economic Prosperity
  - Wealthy and Affordable, Educated
- Safety/ Health
  - CA: Natural Disasters + Pollution
  - PA: Pollution + Public Service (Trains)
- Surrounding Area Consideration
  - Poverty
- Proximity to Urban Areas
  - Public Amenities
- Population Density (Secondary)
  - Areas passing previous measures with  $\geq 1$  million people were ruled out

# Measure 1 Recap “Socioeconomic”

*~Same Methods and limits for PA & CA*

- Socioeconomic:
  - Household Income (Median)  $\geq$  \$70k
  - Disposable Income  $\geq$  \$50k
    - \*Adjusted from baseline (+\$20k)
  - Net Worth  $\geq$  \$500k
    - \*Adjusted from baseline (-\$500k)
  - College Graduates  $\geq$  60%
    - \*Adjusted from baseline (+30%)
- TARGET ZIP CODE PERCENTAGE: **5%**

NUMBER OF ZIP CODES:  
1697 → 100  
(~5.8%)



Median  
Income

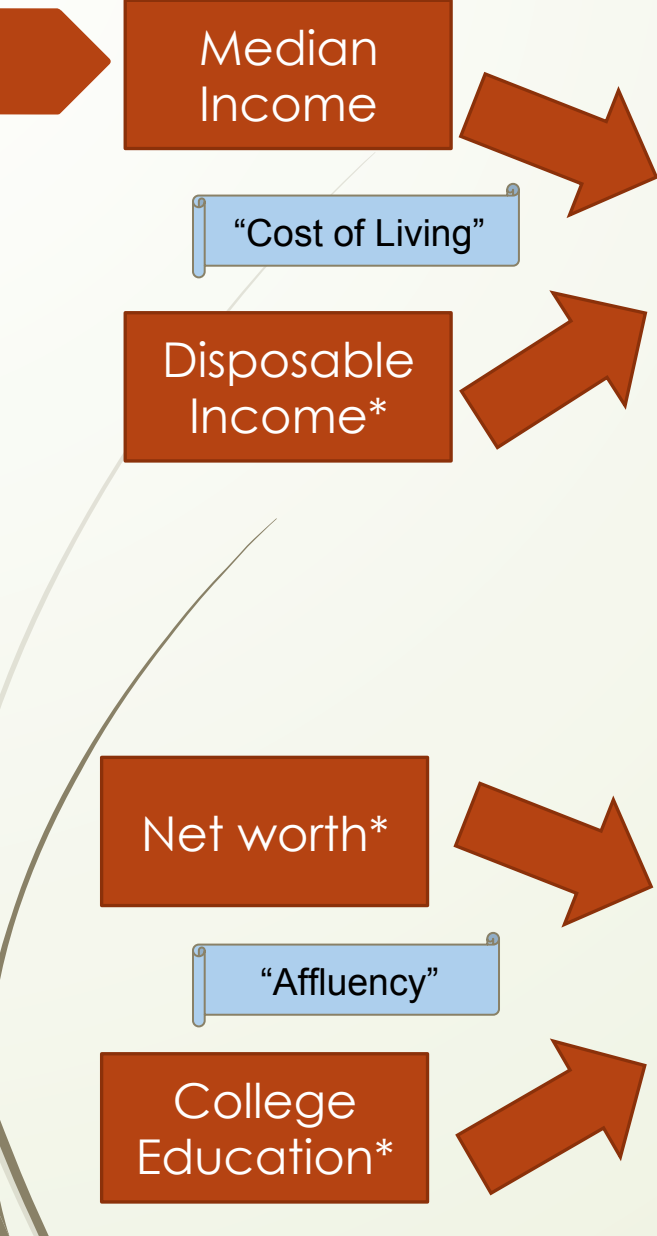
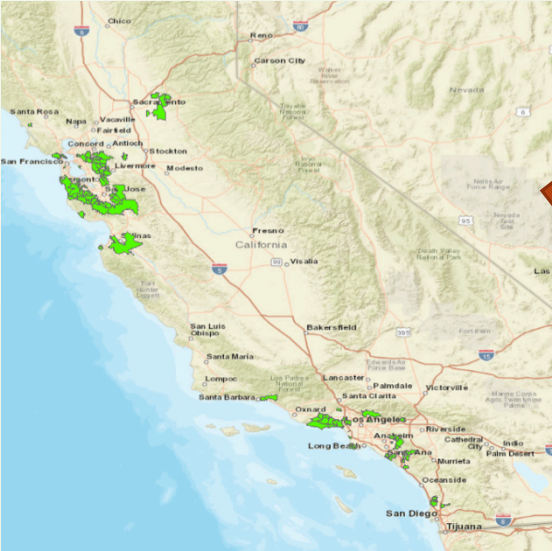
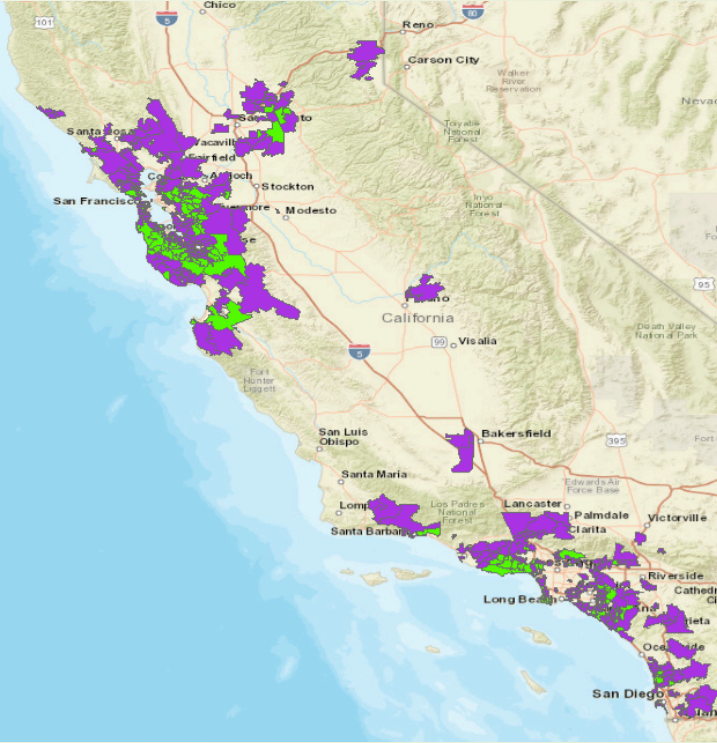
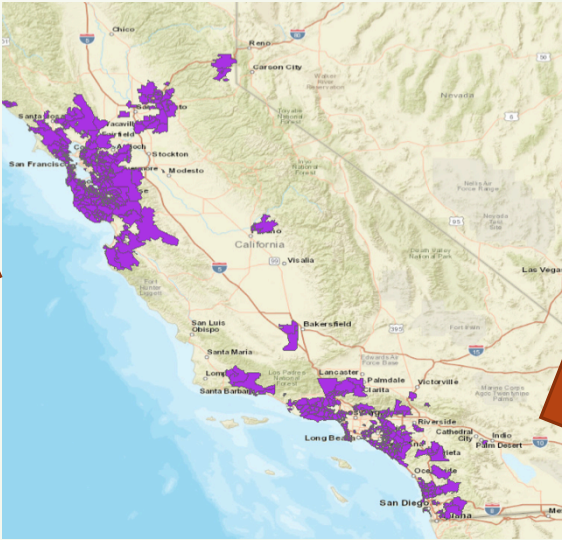
“Cost of Living”

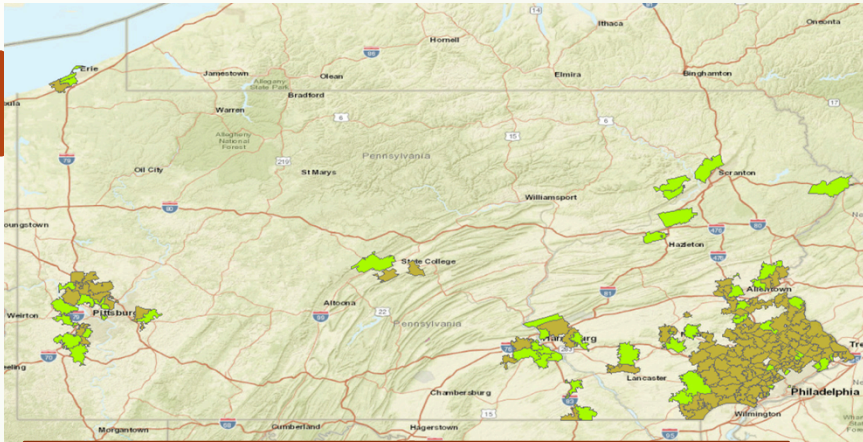
Disposable  
Income\*

Net worth\*

“Affluency”

College  
Education\*

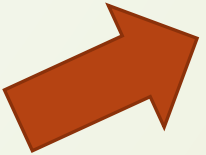
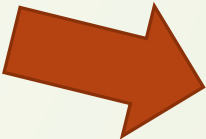




1478 → 48 (-96.7%)  
 (> 5%, Goal exceeded)

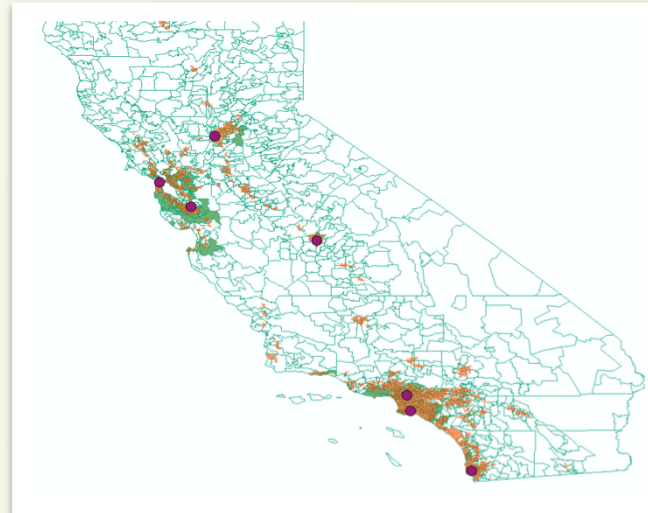
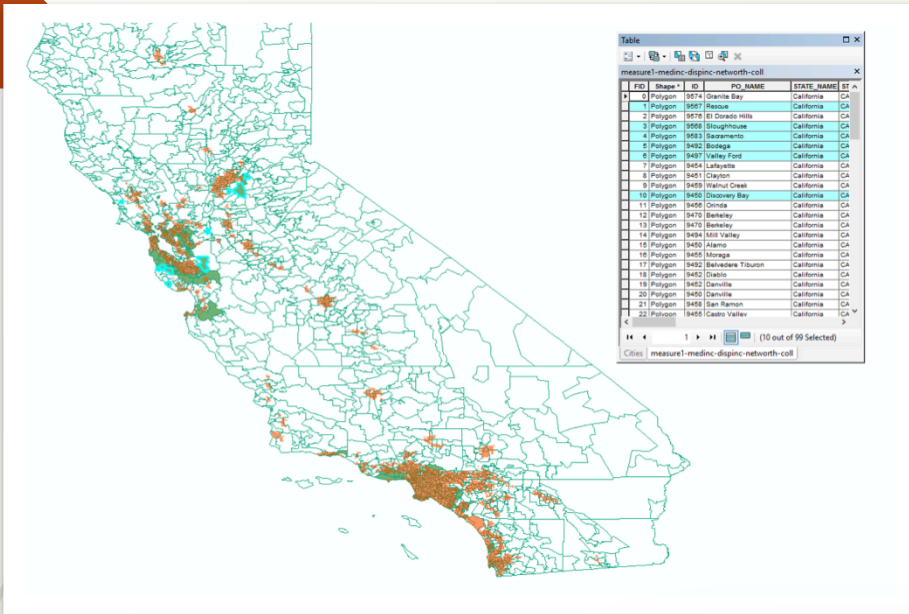
Median Income      Disposable Income

College Education      Net worth

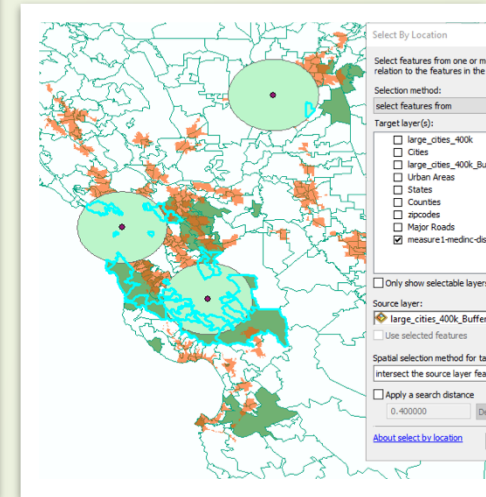




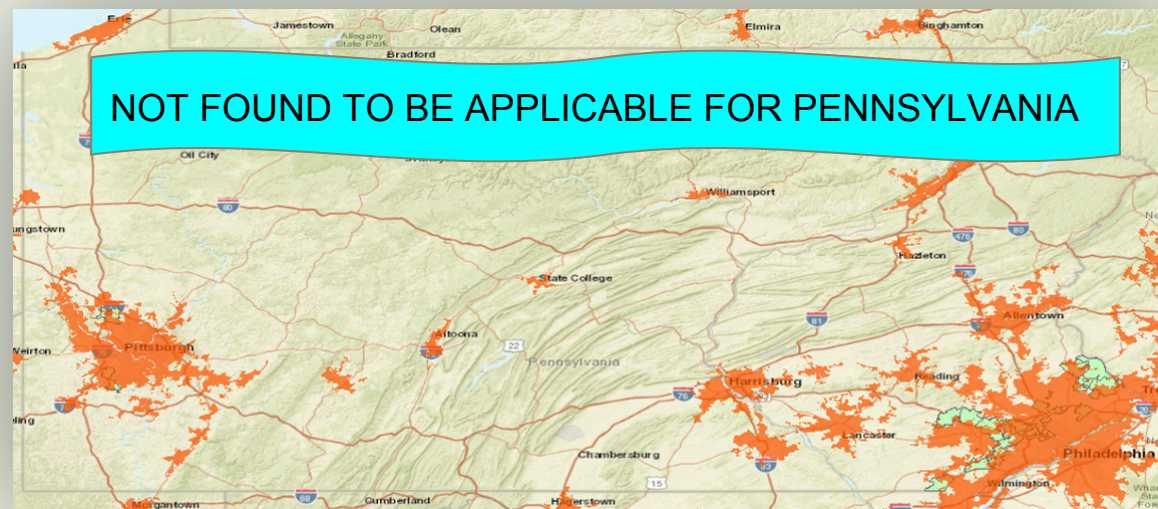
# Urban Area/ Population Density Factor



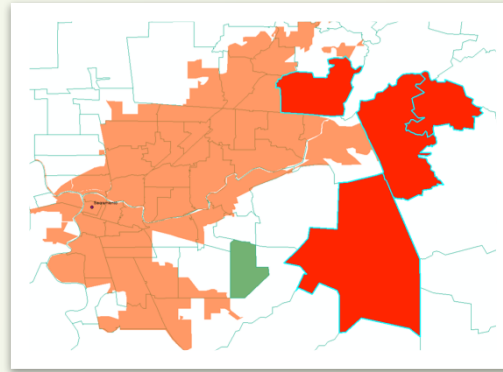
- +400k population



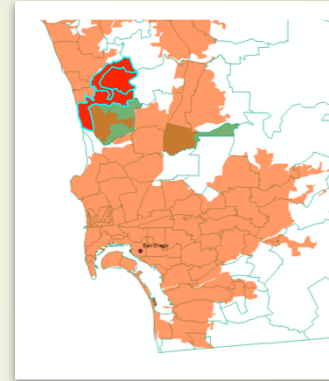
- 15-mile buffer



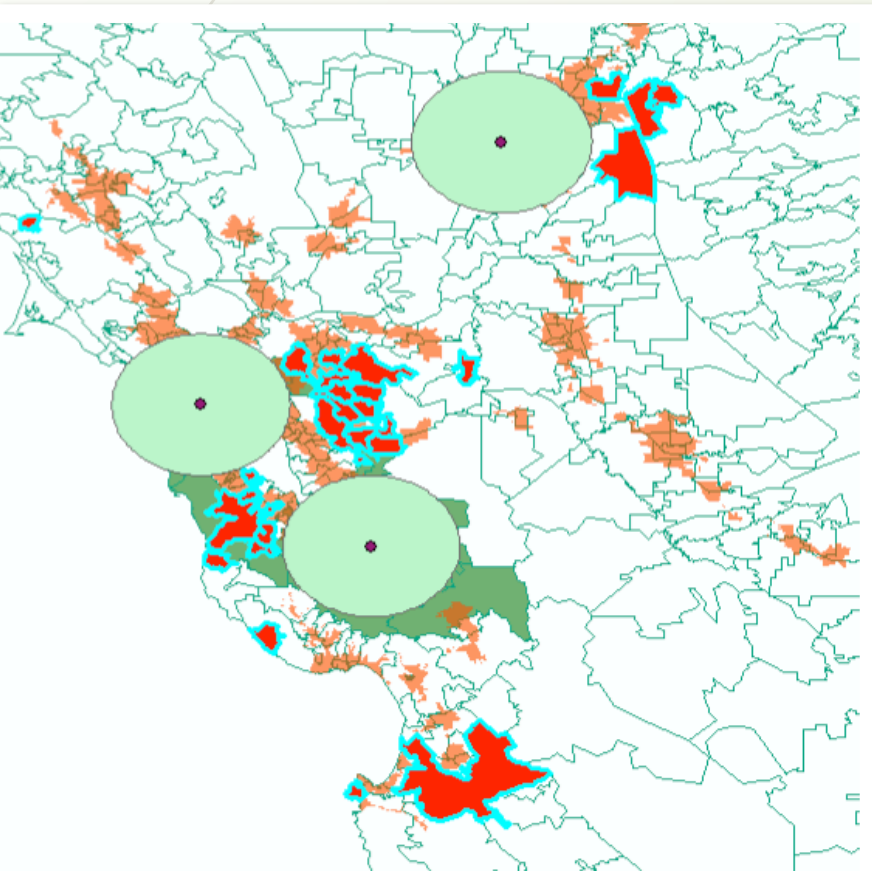
NUMBER OF ZIP CODES:  
100 → **57**  
(IDENTIFIED TOP ~5%)



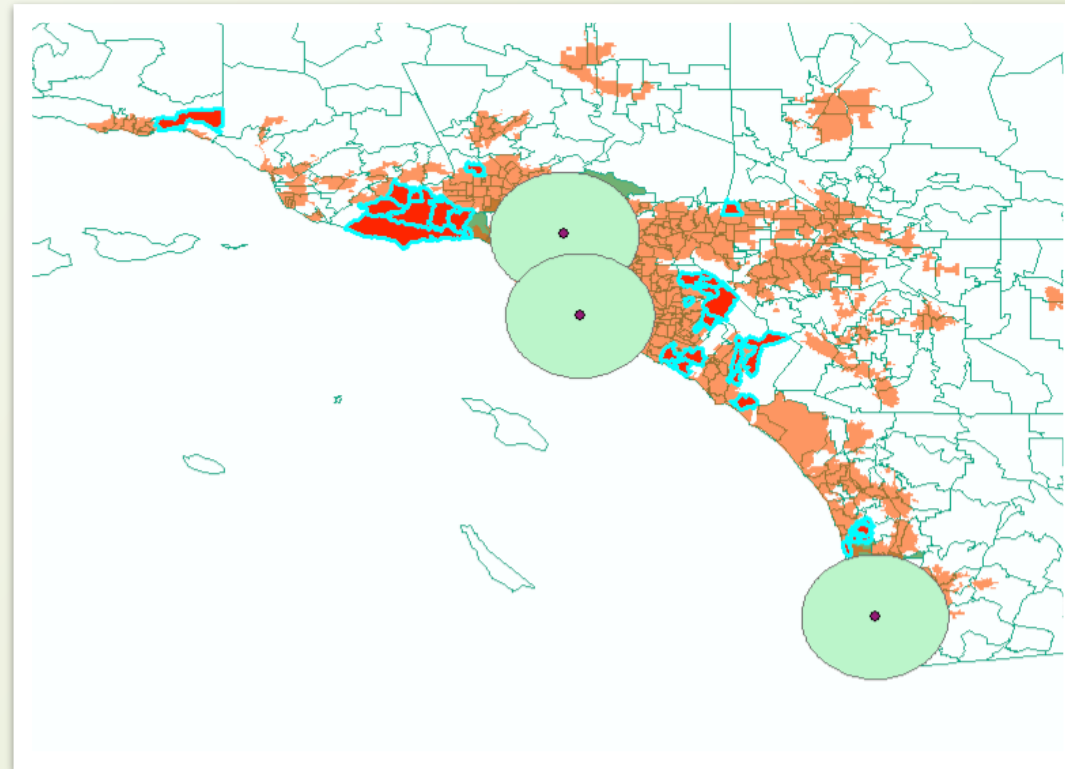
- Sacramento



- San Diego



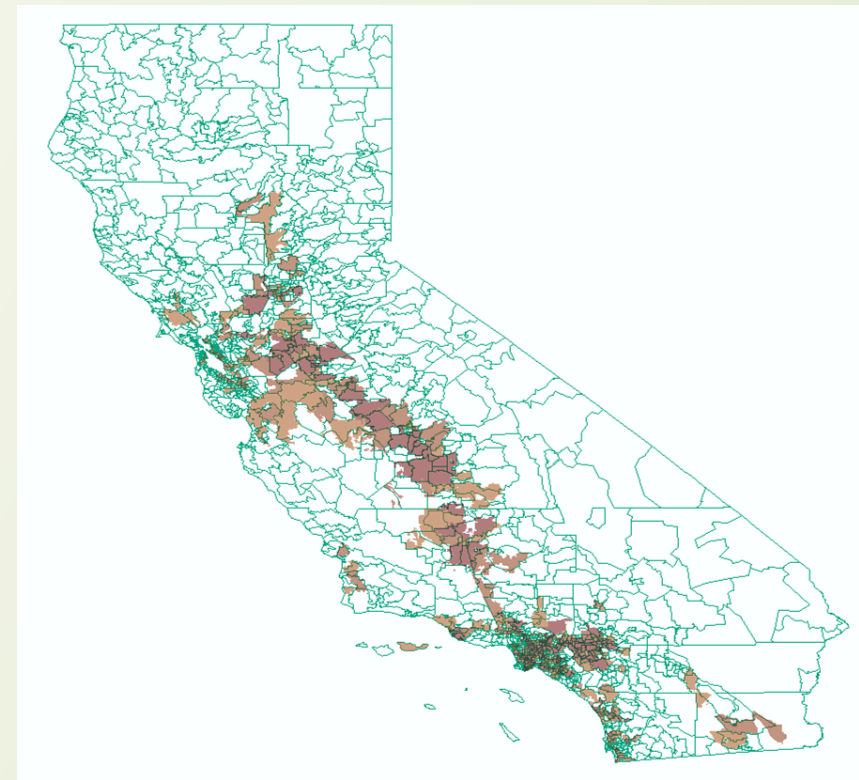
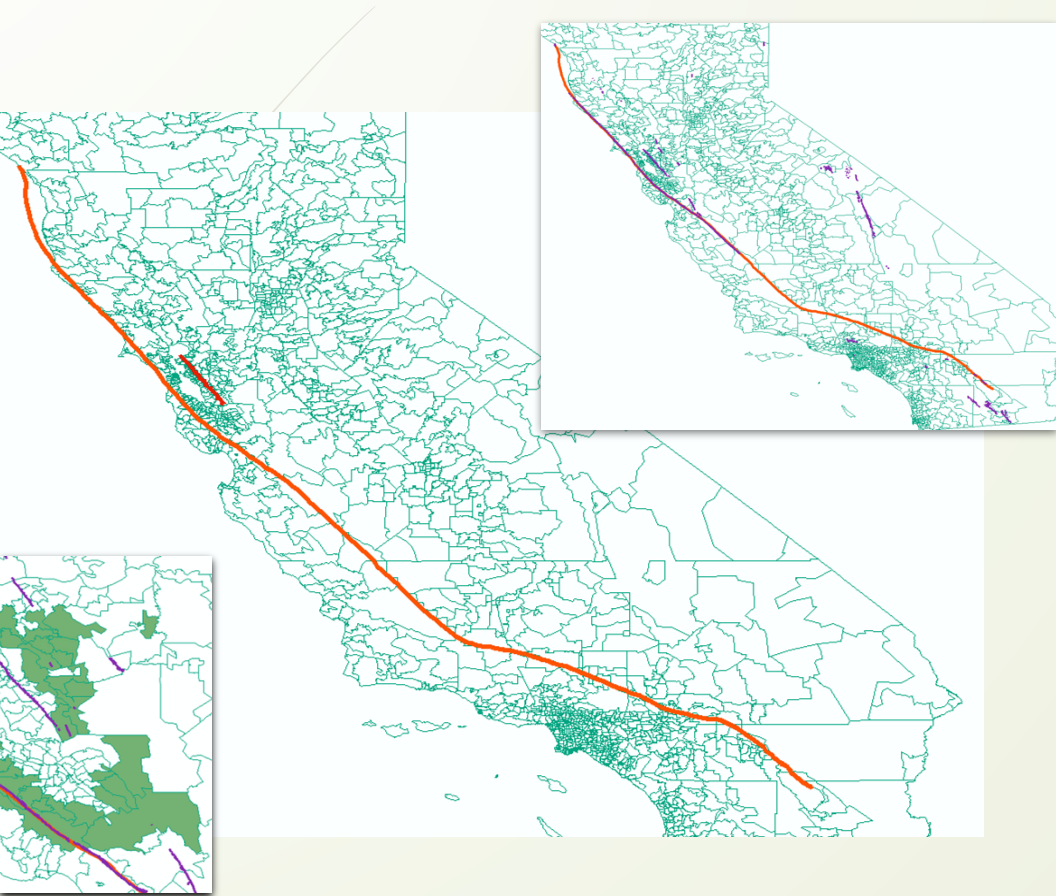
- Greater San Francisco Area



- Greater Los Angeles Area

# MEASURE 2: Environmental Safety

## California Only

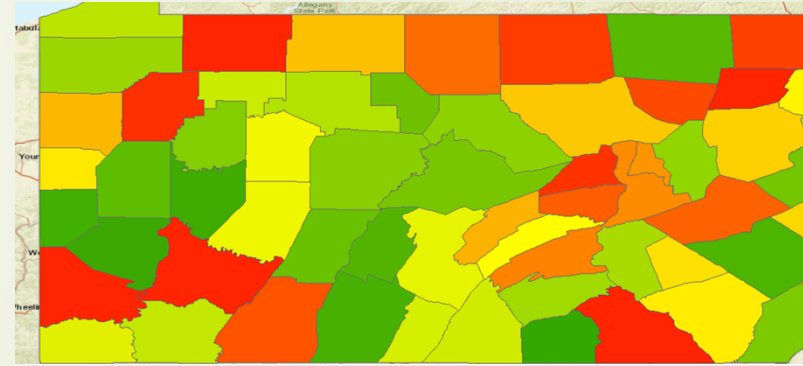
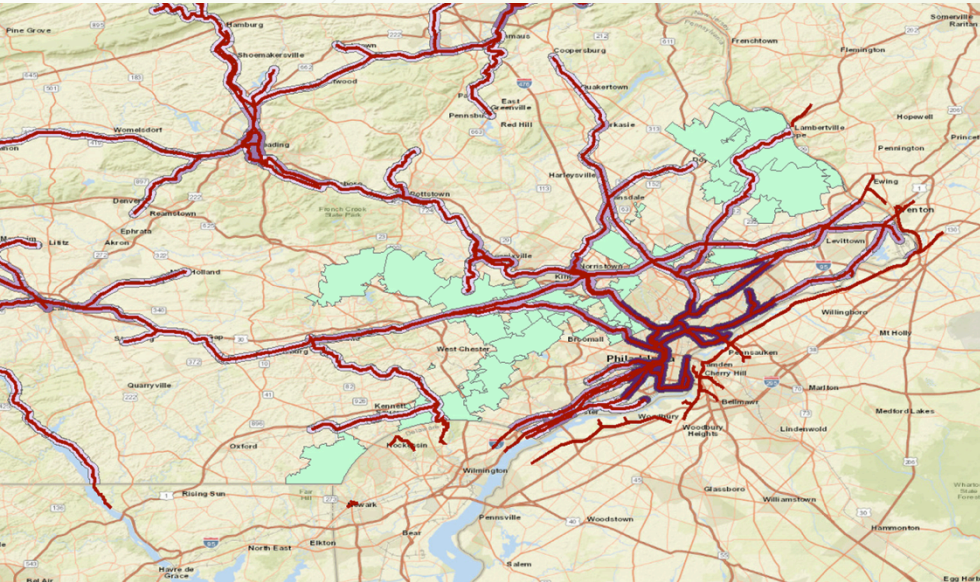


1. 20 mile buffer of San Andreas Fault line (57 → 45)
2. 20 mile buffer Hayward Fault Line
3. Landslide Risk considered but found to be to localized
4. Next 15 miles intersection within 150 year earthquake records
5. (57→ 27)

1. California Environmental Protection Agency (Cal/EPA) and the Office of Environmental Health Hazard Assessment (OEHHA)
2. Pollution Burden Number greater than 5 removed
  - a. 1-10 scale, Averages ranging from 1.5 to 3.5, +4 undesirable
3. (27-->8)

# MEASURE 2: "Public Service"

## Pennsylvania Only



Table

Crime\_PA2002

FIPS	STATE_FIPS	STUDY_NO01	EDITION01	CASE_ID01	POP_ARR01	POP_CR01	AG_ARR01	AG_CR01	COV_IND01	INDEX01	MOD_IND01	MUR01	RAPE01
42007	42	3721	1	2249	100770	124988	36	22	88	2409	2428	2	20
42107	42	3721	1	2299	150411	118397	30	15	96	2459	2487	1	21
42021	42	3721	1	2256	152792	118450	43	26	89	2536	2596	3	24
42056	42	3721	1	2273	128257	1129377	10	9	99	2344	2368	0	41
42075	42	3721	1	2283	120387	112097	24	18	96	3037	3048	0	40
42027	42	3721	1	2283	120387	112097	24	18	96	3037	3048	0	40
42051	42	3721	1	2283	120387	112097	24	18	96	3037	3048	0	40
42013	42	3721	1	2283	120387	112097	24	18	96	3037	3048	0	40
42019	42	3721	1	2283	120387	112097	24	18	96	3037	3048	0	40
42079	42	3721	1	2283	120387	112097	24	18	96	3037	3048	0	40
42069	42	3721	1	2283	120387	112097	24	18	96	3037	3048	0	40
42125	42	3721	1	2283	120387	112097	24	18	96	3037	3048	0	40
42089	42	3721	1	2283	120387	112097	24	18	96	3037	3048	0	40
42041	42	3721	1	2283	120387	112097	24	18	96	3037	3048	0	40
42095	42	3721	1	2283	120387	112097	24	18	96	3037	3048	0	40
42129	42	3721	1	2283	120387	112097	24	18	96	3037	3048	0	40
42029	42	3721	1	2283	120387	112097	24	18	96	3037	3048	0	40
42133	42	3721	1	2283	120387	112097	24	18	96	3037	3048	0	40
42043	42	3721	1	2283	120387	112097	24	18	96	3037	3048	0	40
42049	42	3721	1	2283	120387	112097	24	18	96	3037	3048	0	40
42077	42	3721	1	2283	120387	112097	24	18	96	3037	3048	0	40
42011	42	3721	1	2283	120387	112097	24	18	96	3037	3048	0	40
42071	42	3721	1	2283	120387	112097	24	18	96	3037	3048	0	40
42017	42	3721	1	2283	120387	112097	24	18	96	3037	3048	0	40
42045	42	3721	1	2283	120387	112097	24	18	96	3037	3048	0	40
42091	42	3721	1	2283	120387	112097	24	18	96	3037	3048	0	40
42003	42	3721	1	2247	1281856	1093925	122	93	95	37506	37813	76	272
42101	42	3721	1	2296	1518362	1518362	4	3	100	93888	93888	309	1014

Statistics of Crime\_PA2002

Field: MOD\_IND01

Count: 67  
Minimum: 143  
Maximum: 33888  
Sum: 331285  
Mean: 4944.552239  
Standard Deviation: 12315.785307  
Nulls: 0

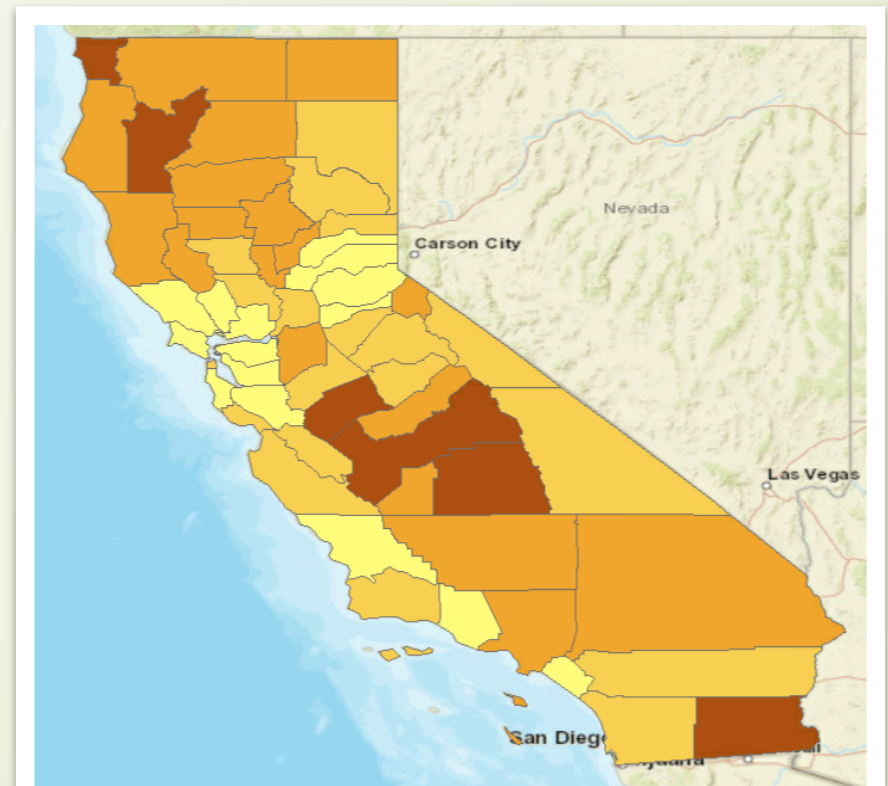
Frequency Distribution

1. Proximity to Train (Highly Desirable)
  - a. Buffer set at 3 miles
2. (48 → 37)

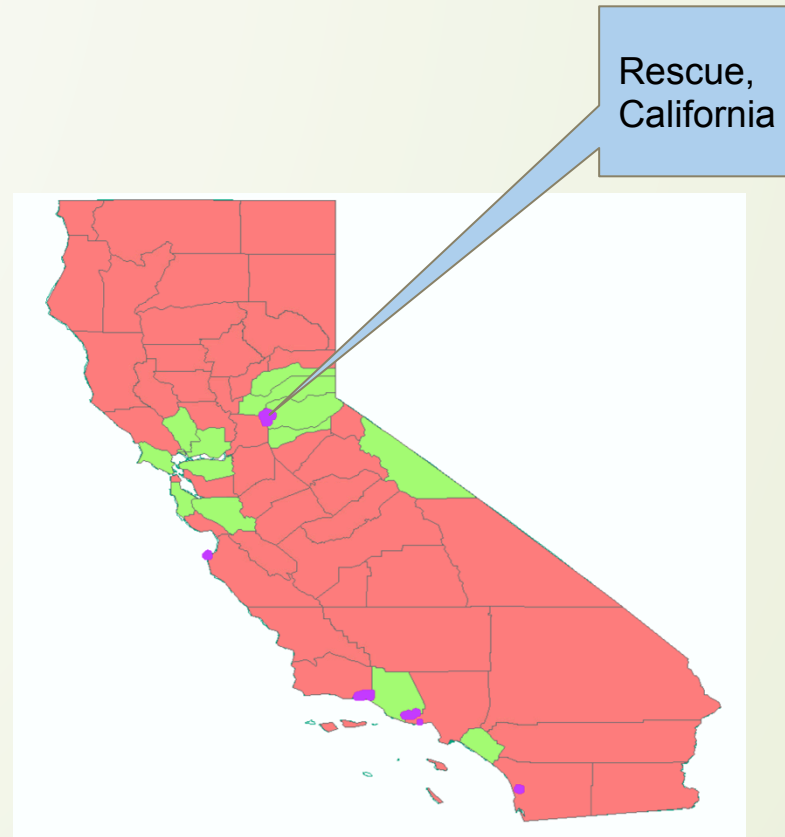
1. SAFETY /CRIME
2. Crime data are reported by county and are provided for eight crimes:
  - a. murder, forcible rape, robbery, aggravated assault, burglary, large motor vehicle theft, and arson.
3. Statistics Function used to determine cut-off point of Modified Index
  - a. 2.5x the mean (10163)
4. (37 → 8)

# MEASURE 3: Surrounding Area Consideration

- **Poverty within Counties**
  - Rating method is used to determine desirable living areas
  - Any rating below 12.6 – 18.6% is rated “-1”
  - This distinguishes between below to the mid well off ranges



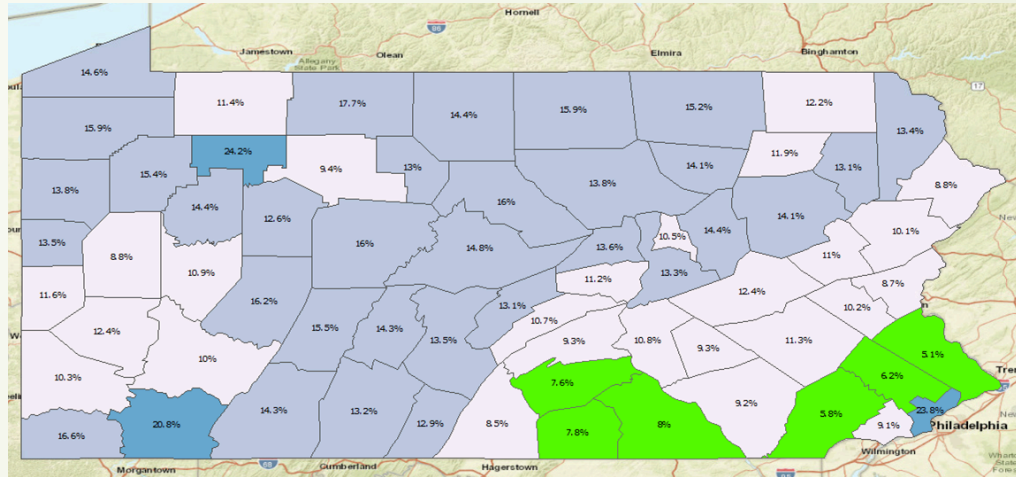
# MEASURE 3: Surrounding Area Consideration



1. Eliminated all zip codes located entirely within counties with poverty > 10% (8 → 1)

**RESULT:** ID: **95672** PO NAME: RESCUE, EL DORADO COUNTY (GREATER SACRAMENTO)

# MEASURE 3: Surrounding Area Consideration



1. Eliminated all zip codes located entirely within counties with poverty > 8\*% (8 → 3)

RESULTS: 19343 (Glenmoore), 19425 (Chester Springs), 19355 (Malvern)

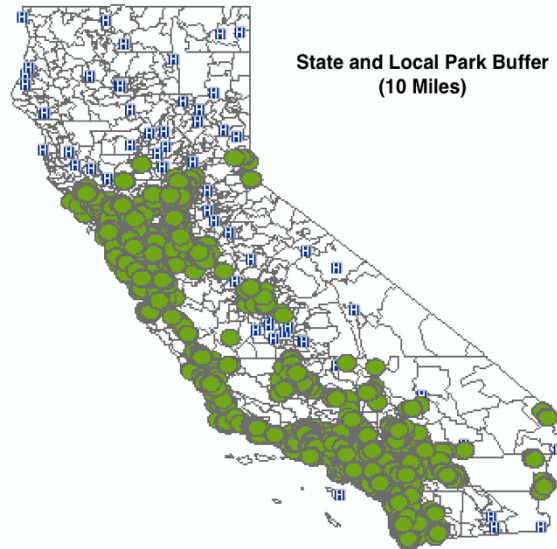
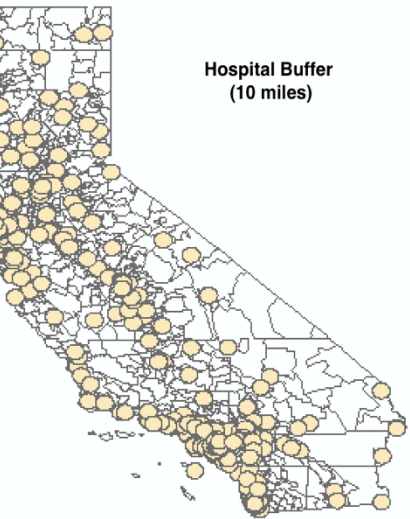


# **MEASURE 4: Quality of Life** *~used for verification*

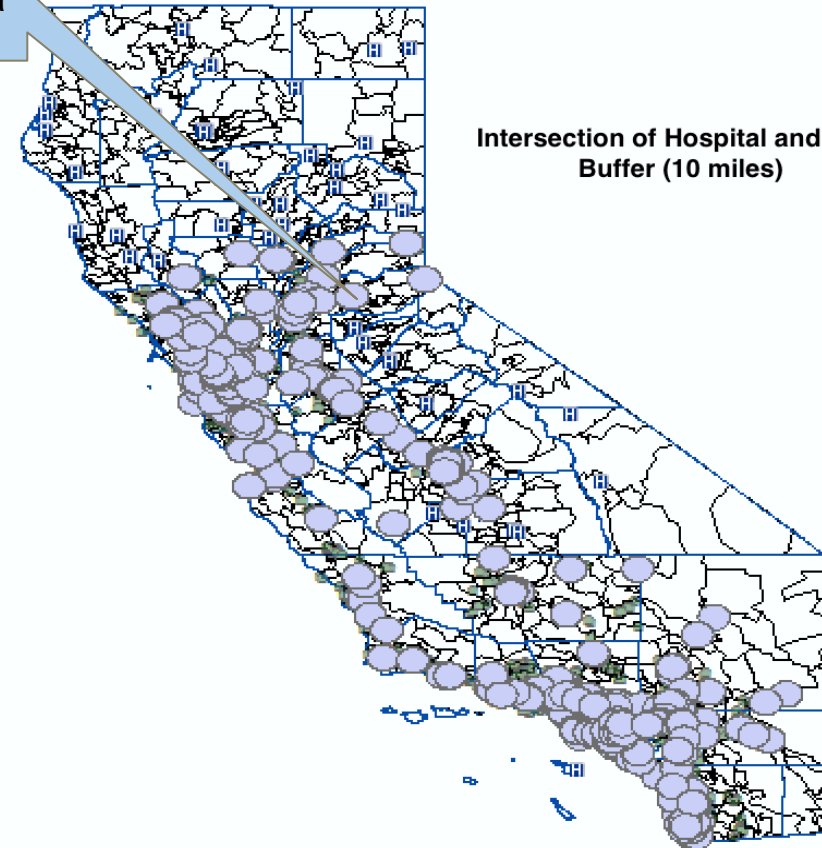
- Health & Recreation
  - Hospital within 10 miles of zip-code
  - State or city park within 10 miles of zip-code
- Found spatial intersection of hospitals and park buffer zones for CA
- Found spatial overlay of hospitals and park buffer zones for PA



# MEASURE 4: Quality of Life (California)

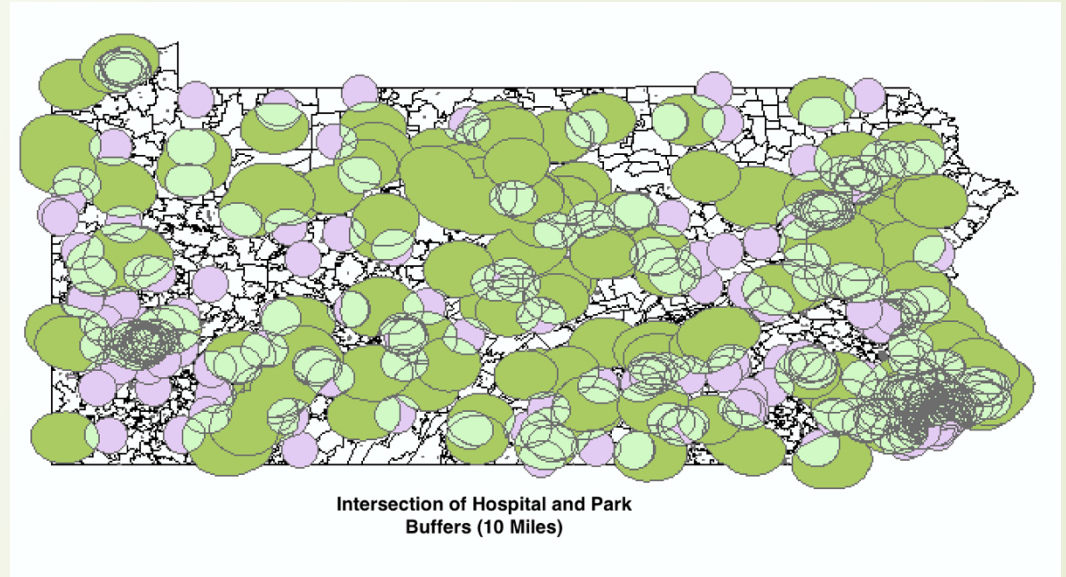
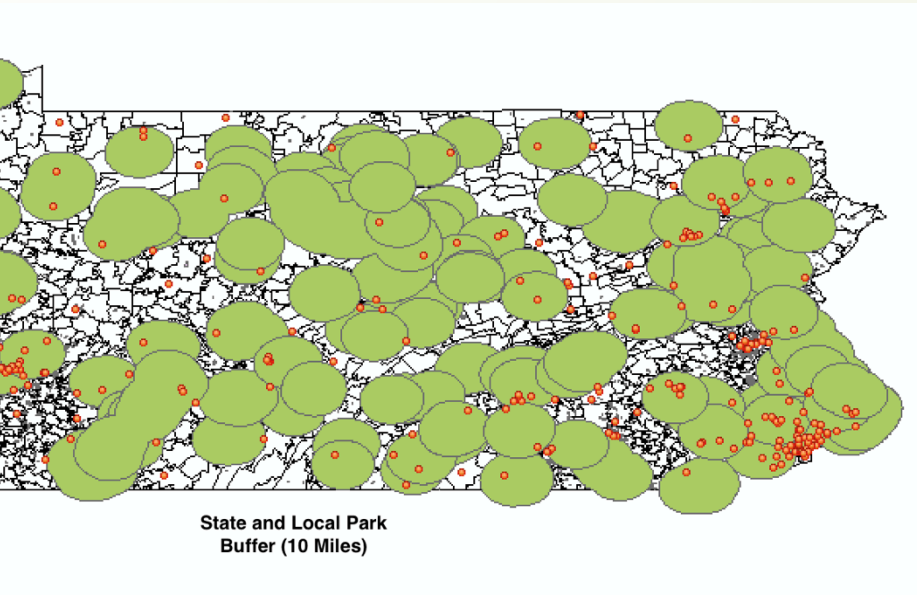


Rescue,  
California

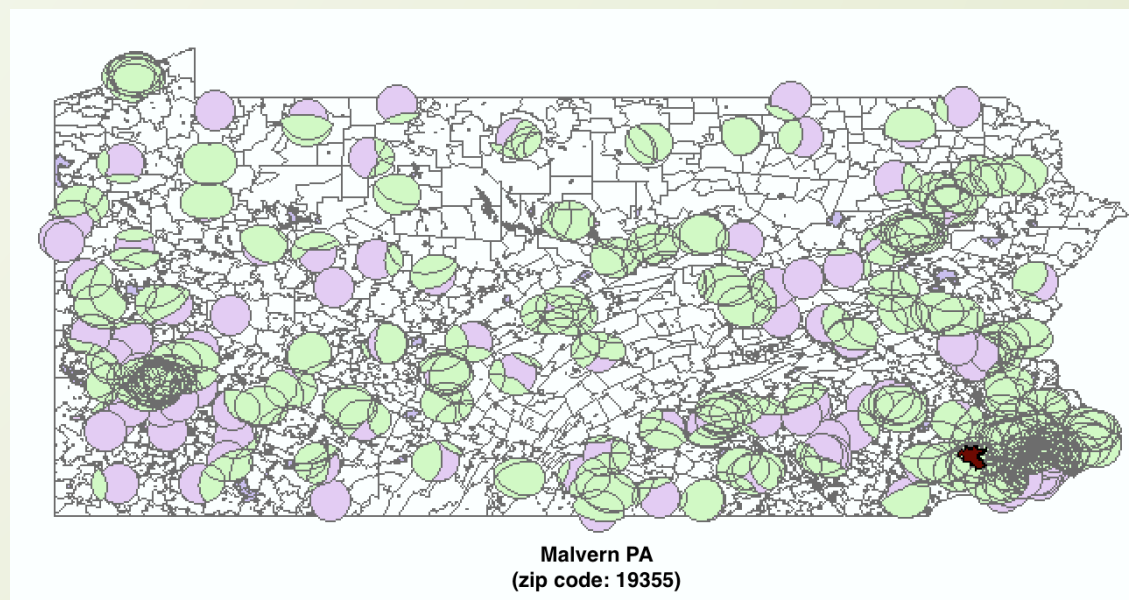


*After Verification Results: 95672 (Rescue)*

# MEASURE 4: Quality of Life (Pennsylvania)

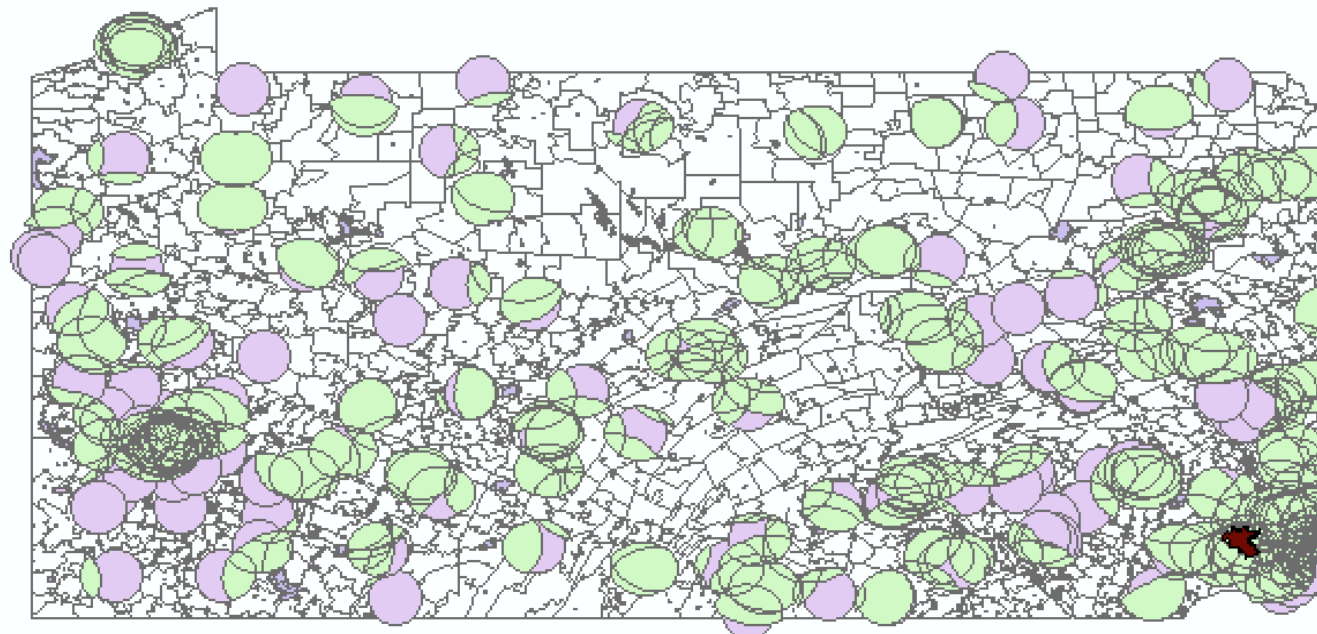


After Verification Results: 19355 (Malvern)

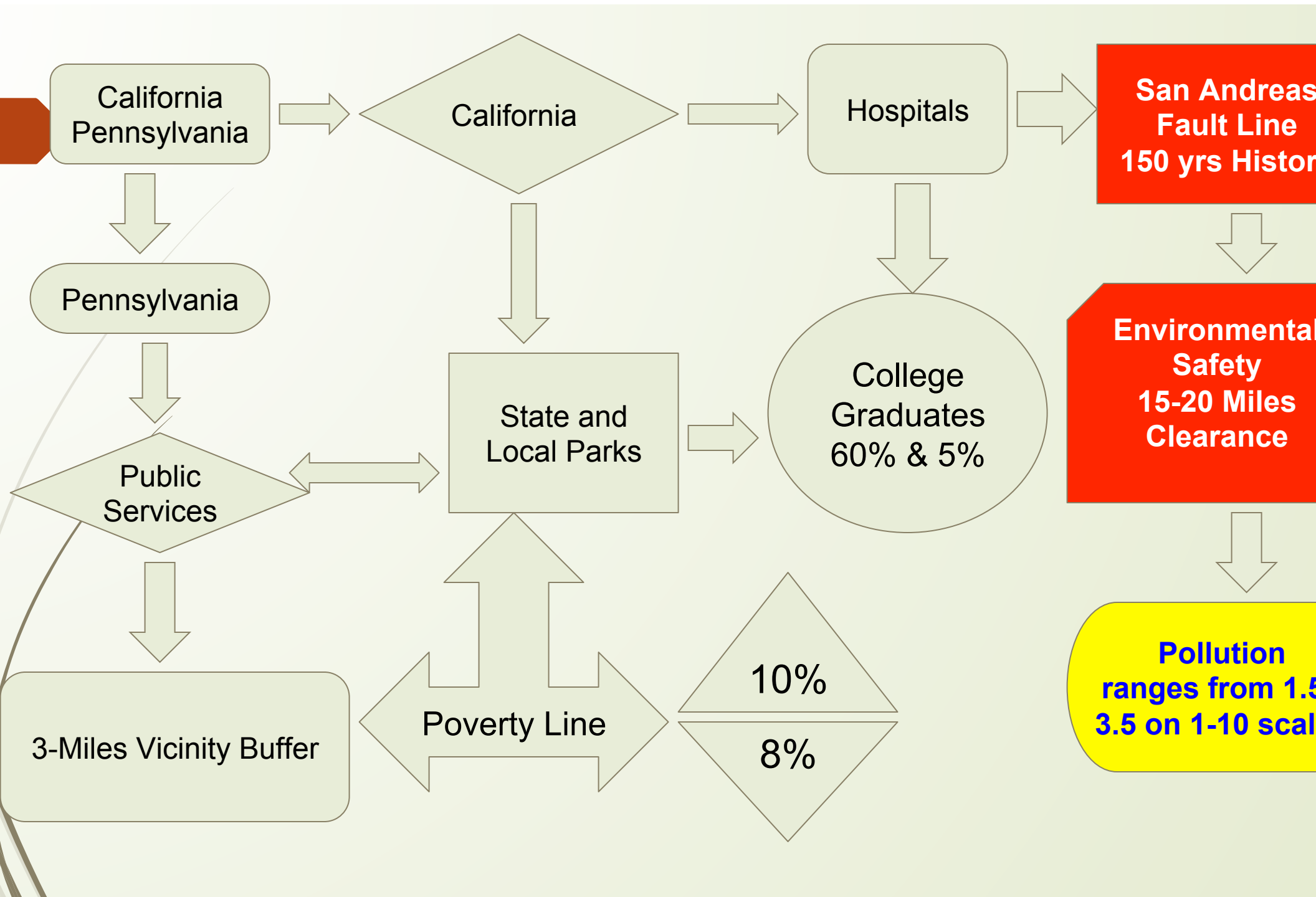


# Selection Tools

- ❖ Utilize GIS buffer capabilities
- ❖ Intersections
- ❖ Scaled method
- ❖ Proximity
- ❖ Measures
- ❖ Overlap



**Malvern PA**  
**(zip code: 19355)**



# Urban Vs. Suburban Vs. Rural Life

## City living

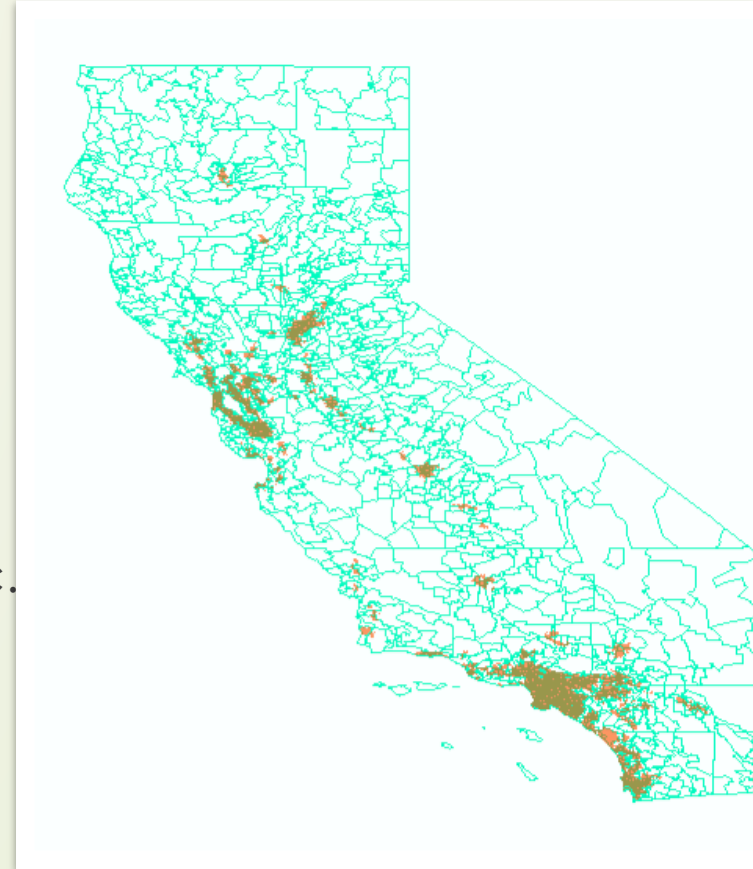
- Population density (+400K)
- Transit system (trains, buses)
- Modes of transportation (transit, bus, bike, etc...)

## Suburban Living

- More attractions (parks, trails, education centers, etc.)
- More Affordable

## Rural Living

- Open Space
- More Affordable Land
- Might require commute for work, healthcare, etc



# RESULTS

## RESCUE, CALIFORNIA (Zip Code 95672)

- This zip was a surprise
- Quiet, scenic rural countryside
- Residents commute or own local vinyard
- 20 minute drive from Sacramento, CA



## MALVERN, PA (Zip Code 19355)

- Quiet, suburban town
- "Historic area"- abundance of parks
- 35 minutes outside of Philadelphia

